

P.U.D.

THORNHILL VILLAGE

A PLAT OF A PORTION OF SECT. 28, TWP. 47 S, RGE. 42 E.
 AND ALSO BEING A REPLAT OF A PORTION OF TRACT 18, BOCA DEL MAR PLAT, NO. 6, AS RECORDED IN
 PLAT BOOK 30, PAGES 142 & 143 OF THE PUBLIC RECORDS OF PALM BEACH COUNTY, FLORIDA
 PALM BEACH COUNTY, FLORIDA

JOHN A. GRANT, JR., INC. CONSULTING ENGINEERS & LAND SURVEYORS BOCA RATON, FLORIDA

JUNE 1978
 SHEET 2 OF 2

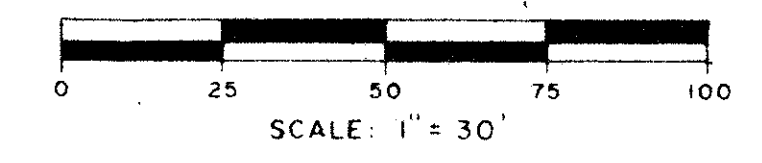
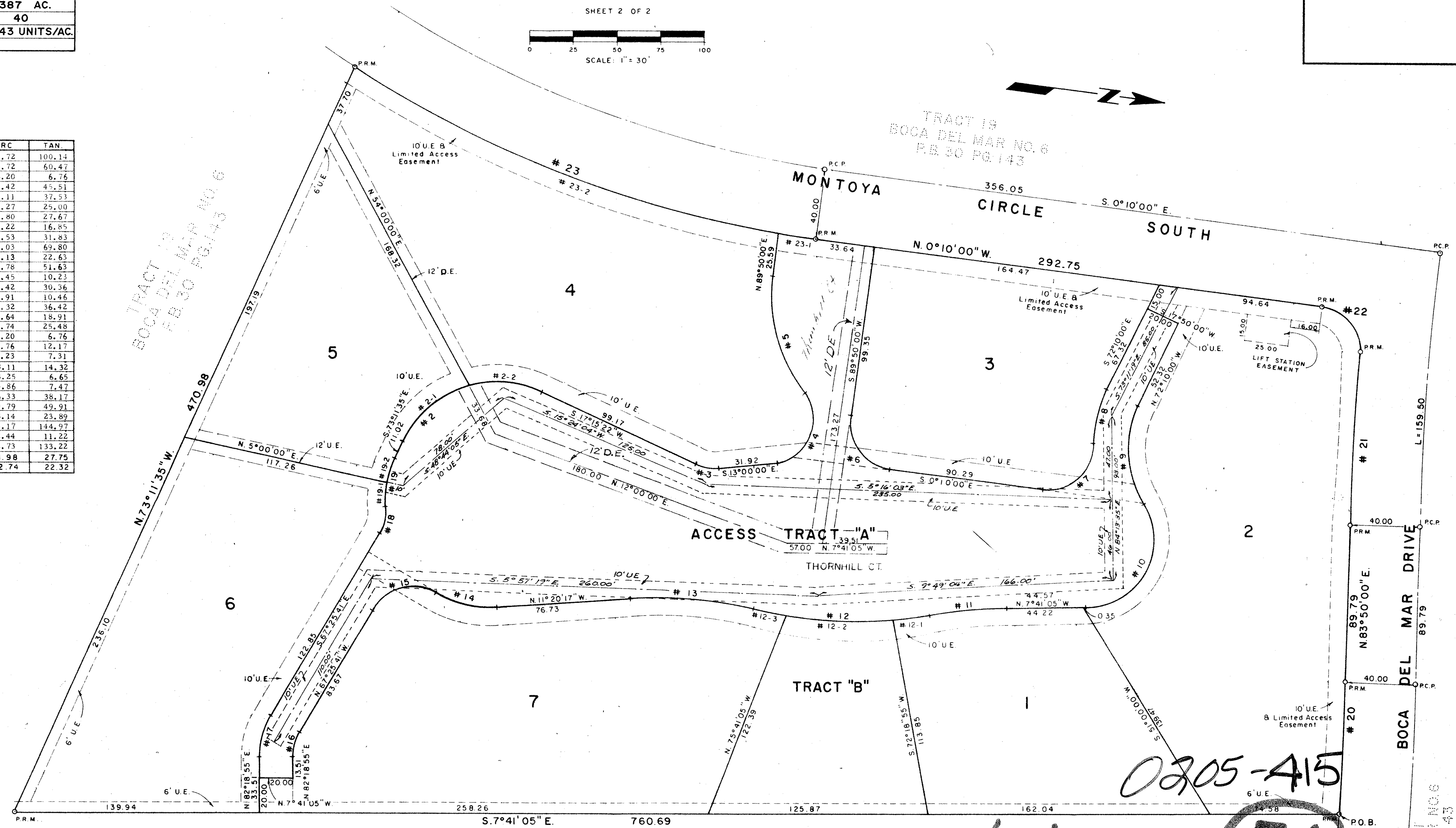


TABLE OF AREAS

| | |
|--------------------------|----------------|
| PARCEL 1 | 0.369 AC. |
| 2 | 0.799 AC. |
| 3 | 0.415 AC. |
| 4 | 0.740 AC. |
| 5 | 0.381 AC. |
| 6 | 0.593 AC. |
| 7 | 0.700 AC. |
| TRACT "A" - ACCESS | 1.151 AC. |
| TRACT "B" - RECREATION | 0.239 AC. |
| TOTAL AREA THIS PLAT | 5.387 AC. |
| TOTAL NO. UNITS PROPOSED | 40 |
| DENSITY, THIS PLAT | 7.43 UNITS/AC. |
| LAND USE - TOWNHOUSE | |

ARC DATA

| NO. | DELTA | RADIUS | CHORD | ARC | TAN. |
|------|--------------|---------|--------|--------|--------|
| 1 | 118° 08' 42" | 60.00 | 102.94 | 123.72 | 100.14 |
| 2 | 90° 26' 57" | 60.00 | 85.18 | 94.72 | 60.47 |
| 3 | 30° 15' 22" | 25.00 | 13.05 | 13.20 | 6.76 |
| 4 | 122° 26' 07" | 25.00 | 43.82 | 53.42 | 45.51 |
| 5 | 45° 16' 07" | 90.00 | 69.27 | 71.11 | 37.53 |
| 6 | 90° 00' 00" | 25.00 | 35.36 | 39.27 | 25.00 |
| 7 | 95° 47' 42" | 25.00 | 37.10 | 41.80 | 27.67 |
| 8 | 23° 47' 42" | 80.00 | 32.99 | 33.22 | 16.85 |
| 9 | 55° 53' 21" | 60.00 | 56.23 | 58.53 | 31.83 |
| 10 | 120° 22' 16" | 40.00 | 69.41 | 84.03 | 69.80 |
| 11 | 10° 31' 23" | 245.70 | 45.06 | 45.13 | 22.63 |
| 12 | 23° 44' 02" | 245.70 | 101.05 | 101.78 | 51.63 |
| 12-1 | 4° 46' 06" | 245.70 | 20.44 | 20.45 | 10.23 |
| 12-2 | 14° 05' 21" | 245.70 | 60.27 | 60.42 | 30.36 |
| 12-3 | 4° 52' 35" | 245.70 | 20.90 | 20.91 | 10.46 |
| 13 | 16° 51' 51" | 245.70 | 72.06 | 72.32 | 36.42 |
| 14 | 34° 59' 19" | 60.00 | 36.07 | 36.64 | 18.91 |
| 15 | 91° 04' 43" | 25.00 | 35.69 | 39.74 | 25.48 |
| 16 | 30° 15' 24" | 25.00 | 13.05 | 13.20 | 6.76 |
| 17 | 30° 15' 24" | 45.00 | 23.49 | 23.76 | 12.17 |
| 18 | 32° 36' 36" | 25.00 | 14.04 | 14.23 | 7.31 |
| 19 | 26° 50' 42" | 60.00 | 27.86 | 28.11 | 14.32 |
| 19-1 | 12° 39' 11" | 60.00 | 13.22 | 13.25 | 6.65 |
| 19-2 | 14° 11' 31" | 60.00 | 14.82 | 14.86 | 7.47 |
| 20 | 2° 44' 18" | 1597.02 | 76.32 | 76.33 | 38.17 |
| 21 | 3° 24' 34" | 1677.02 | 99.78 | 99.79 | 49.91 |
| 22 | 87° 24' 34" | 25.00 | 34.55 | 38.14 | 23.89 |
| 23 | 25° 24' 22" | 643.11 | 282.84 | 285.17 | 144.97 |
| 23-1 | 1° 59' 57" | 643.11 | 22.44 | 22.44 | 11.22 |
| 23-2 | 23° 24' 25" | 643.11 | 260.90 | 262.73 | 133.22 |
| 2-1 | 49° 38' 10" | 60.00 | 50.37 | 51.98 | 27.75 |
| 2-2 | 40° 48' 47" | 60.00 | 41.84 | 42.74 | 22.32 |



TRACT 18-A
 BOCA DEL MAR NO. 6
 P.B. 30 PG. 143

NOTES 20/47/42
 Bearings shown hereon are based on bearings recorded by BOCA DEL MAR NO. 6 in Plat Book 30, Pages 142 and 143, Public Records of Palm Beach County, Florida.
 There will be no building, tree, or shrub placed on easements.

- P.R.M. Indicates Permanent Reference Monument
- P.C.P. Indicates Permanent Control Point
- U.E. Indicates Utility Easement
- D.E. Indicates Drainage Easement
- L.E. Indicates Landscape Easement

This instrument was prepared by:
 John A. Grant, Jr., Inc.
 3333 North Federal Highway, Boca Raton, Florida

54

35/184

THORNHILL VILL.